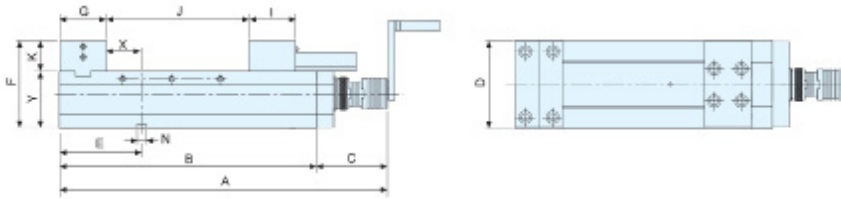
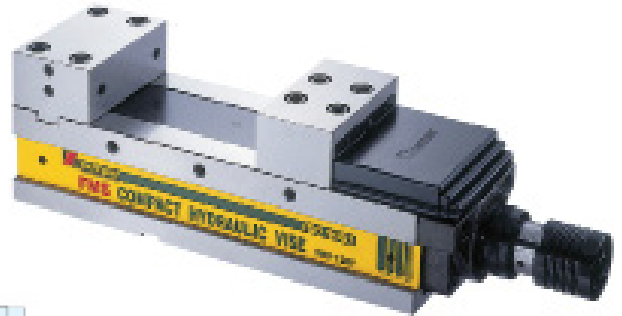


# Mechanical/hydraulic vises VHV

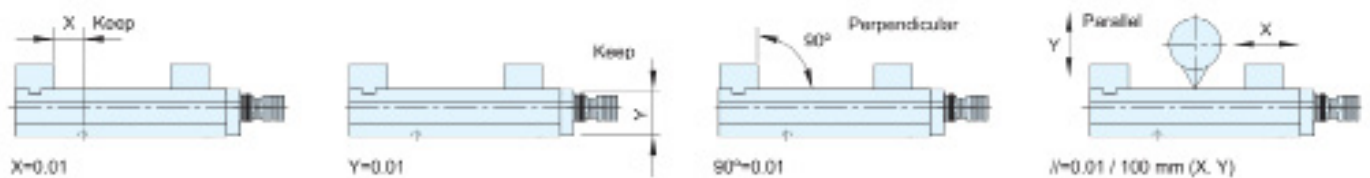


- optimal for vertical machining centers and milling machines
- large clamping capacity and compact dimensions
- vise bed hardened to 45 HRC - reduces wear and ensures long-term accuracy
- beds made of cast material GGG60 ( Ductile FCD600JIS)
- protective covers against the ingress of chips into the vise space
- fixed and movable jaws are hardened to 55 HRC, ground



Order code	Dimensions (mm)													Limited pressure (kN)	Weight (kg)
	A	B	C	D	E	F	G	I	J	K	N	X	Y		
<b>VHV-130V</b>	545	410	135	131	149	147	83	74	210	52	18	65	95	72 (7056kgf)	40
<b>VHV-160V</b>	610	475	135	161	152	160	86	86	300	55	18	65	105	77 (7546kgf)	59
<b>VHV-200V</b>	690	555	135	201	194	170	100	97	350	60	18	92	110	82 (8036kgf)	90
<b>VHV-250V</b>	940	805	135	251	402,5	193	124	124	550	78	22	276,5	115	90 (8820kgf)	153

## Vise strenght

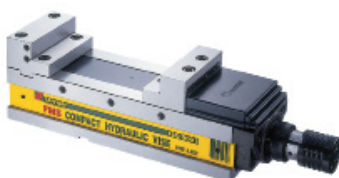


## Examples of use

jaws SJ

jaws FB-A and jaws FB-B

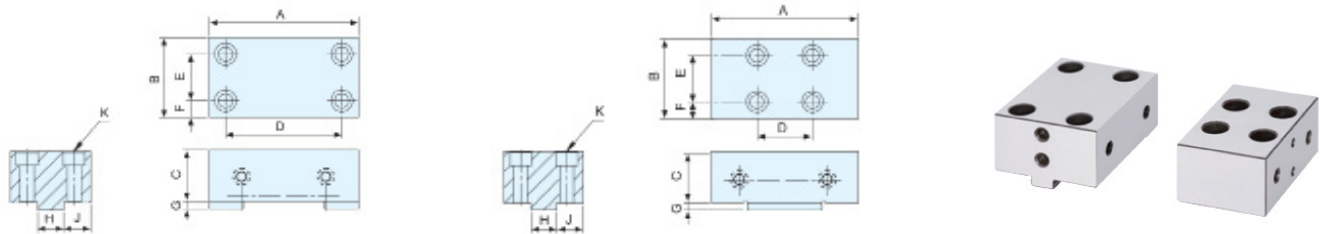
jaws FB-A and jaws FB-C



# Mechanical/hydraulic vises VHV

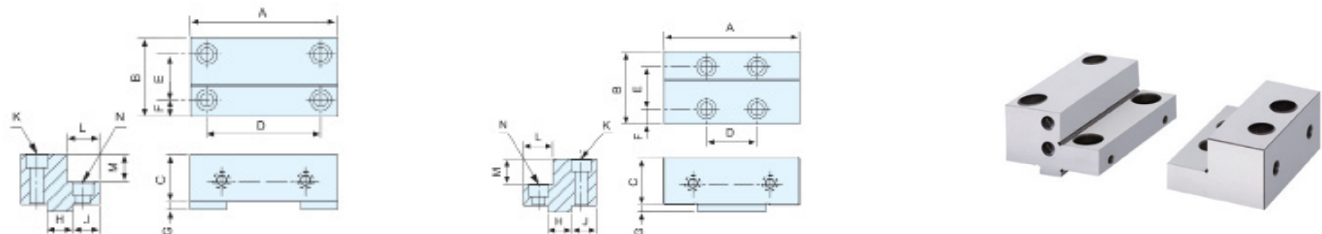
## Optional accessories - jaws

Standart jaw hardened HRC55°, ground



Type	Order code	Dimensions (mm)										Weight (kg)
		A	B	C	D	E	F	G	H	J	K	
Fixed jaw	MA-130A	130	83	52	95	45	21,5	8	24	32	M12x55L	4
	MA-160A	160	86	55	124	50	18	8	28	29	M14x60L	6
	MA-200A	200	100	60	150	62	19	9,5	28	36	M16x65L	9
	MA-250A	250	124	78	200	75	24,5	9,5	30	47	M20x90L	17,6
Movable jaw	MB-130A	130	74	52	45	42	16	8,5	24	25	M12x55L	4,5
	MB-160A	160	86	55	60	50	18	8,5	28	29	M14x60L	6
	MB-200A	200	97	60	74	59	19	9,5	28	34,5	M16x65L	9
	MB-250A	250	124	78	92	75	24,5	9,5	30	47	M20x90L	17,6

Fitted jaw hardened HRC55°, ground



Type	Order code	Dimensions (mm)												Weight (kg)	
		A	B	C	D	E	F	G	H	J	K	L	M		N
Fixed jaw	MC-130A	130	83	52	95	45	21,5	8	24	32	M12x55L	35	30	M12x25L	4
	MC-160A	160	86	55	124	50	18	8	28	29	M14x60L	35	30	M14 x30L	6
	MC-200A	200	100	60	150	62	19	9,5	28	36	M16x65L	38	30	M16x35L	9
	MC-250A	250	124	78	200	75	24,5	9,5	30	47	M20x90L	50	40	M20x50L	17,6
Movable jaw	MD-130A	130	74	52	45	42	16	8,5	24	25	M12x55L	30	30	M12x25L	4,5
	MD-160A	160	86	55	60	50	18	8,5	28	29	M14x60L	35	30	M14 x30L	6
	MD-200A	200	97	60	74	59	19	9,5	28	34,5	M16x65L	38	30	M16x35L	9
	MD-250A	250	124	78	92	75	24,5	9,5	30	47	M20x90L	50	40	M20x50L	17,6

# Mechanical/hydraulic vises VHV



## Optional accessories - jaws

standard jaw hardened



Type	Fixed jaw		
	Order code	Screw	Plug (pc)
<b>FB-130</b>	FB-130Ax1	M12x30Lx4	8
<b>FB-160</b>	FB-160Ax1	M14x30Lx4	8
<b>FB-200</b>	FB-200Ax1	M16x35Lx4	12
<b>FB-250</b>	FB-250Ax1	M16x45Lx4	15

standard jaw hardened



Type	Fixed jaw		
	Order code	Screw	Plug (pc)
<b>FB-130</b>	FB-130Ax1	M12x30Lx4	8
<b>FB-160</b>	FB-160Ax1	M14x30Lx4	8
<b>FB-200</b>	FB-200Ax1	M16x35Lx4	12
<b>FB-250</b>	FB-250Ax1	M16x45Lx4	15

Type	Swinging jaw		
	Order code	Screw	Plug (pc)
<b>FB-130</b>	FB-130Bx1	M12x30Lx4	8
<b>FB-160</b>	FB-160Bx1	M14x30Lx4	8
<b>FB-200</b>	FB-200Bx1	M16x35Lx4	10
<b>FB-250</b>	FB-250Bx1	M16x40Lx4	12

Type	Movable jaw		
	Order code	Screw	Plug (pc)
<b>FB-130</b>	FB-130Cx1	M12x30Lx4	8
<b>FB-160</b>	FB-160Cx1	M14x30Lx4	8
<b>FB-200</b>	FB-200Cx1	M16x35Lx4	10
<b>FB-250</b>	FB-250Cx1	M16x40Lx4	10

## Optional accessories - a set of stops (4 pc)



FB-511F  
(M12x30L)



FB-F511R  
(M12x30L)



FB-519F  
(M12x30L)



FB-519R  
(M12x30L)



FB-524F  
(M12x30L)



FB-524R  
(M12x30L)



FB-511FR  
(M12x30L)



FB-550HR  
(M12x60L)



FB-550SF  
(M12x70L)



FB-550SR  
(M12x70L)



FB-525HF  
(M12x35L)



FB-525HR  
(M12x35L)



FB-550HF  
(M12x60L)

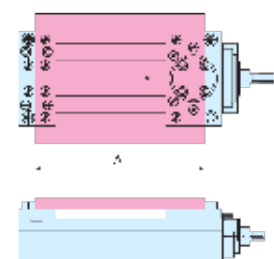
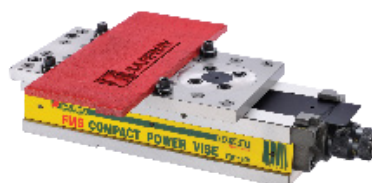
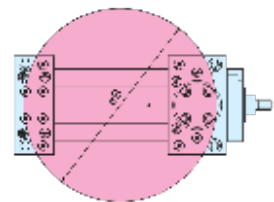
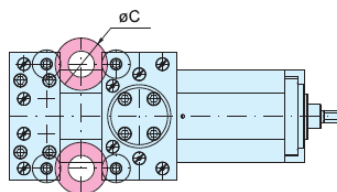
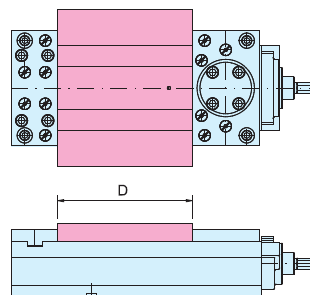


# Mechanical/hydraulic vises VHV

## Exemplary VHV clamping methods

### FB series accessories

Vise size	Possible parameters (mm)			
	A	Ø B	Ø C	D
130	0-320	90-350	0-90	0-210
160	0-380	90-420	0-120	0-280
200	0-460	120-500		0-320



# Mechanical/hydraulic vises VHV



## Exemplary VHV clamping methods

