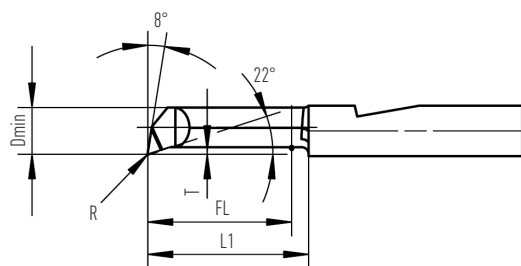


# Internal boring bars ams



## COPYING

Order code	Dimensions (mm)				
	Dmin	FL	R	T	L1
GEMCS-K-390802-150.40R	3,9	15	0,2	0,8	17
GEMCS-K-500502-250.60R	5	25	0,2	0,5	26
GEMCS-K-591802-200.60R	5,9	20	0,2	1,8	22