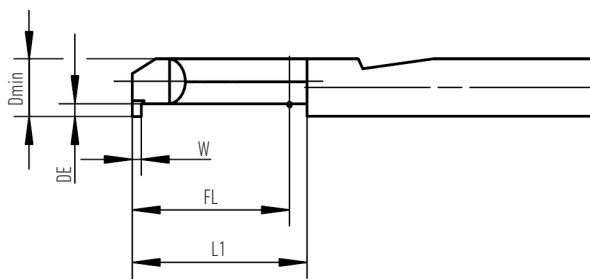


Internal boring bars ams



GROOVING

Order code	Dimensions (mm)				
	Dmin	W	DE	FL	L1
GEMCS-S-39100800-100.40R	3,9	1	0,8	10	12
GEMCS-S-59151800-100.60R	5,9	1,5	1,8	10	12
GEMCS-S-69202500-150.80R	6,9	2	2,5	15	17
GEMCS-S-79182500-250.80R	7,9	1,8	2,5	25	27