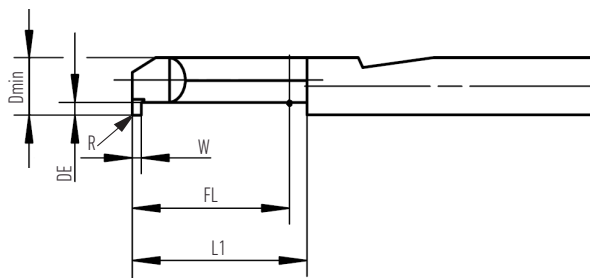


Internal boring bars ams



CIR-CLIP - DIN471/472

Order code	Dimensions (mm)					
	Dmin	W	DE	R	FL	L1
GEMCS-472-41139110-150.40R	4,1	1,39	1,1	0,05	15	17
GEMCS-472-84119200-200.80R	8,4	1,19	2	0,05	20	22
GEMCS-472-84169250-200.80R	8,4	1,69	2,5	0,05	20	22